

Watercolor News

www.tallahasseewatercolorssociety.com

paint@tallahasseewatercolorssociety.com

Try Something Different By: Linda Pelc, President

I believe artists must establish their own style of painting in order to become recognized. However I am that kind of artist that always wants to try something new, something different. It may mean experimenting with a new pigment. It may mean using a different tool. When teaching, I tell my students that this kind of painting is called an adventure.

Anne Abgott took fifteen artists on an adventure in using daring color. She called it mingling. At our Sunday, April 15th, monthly meeting a panel of those artists who spent time with Anne will share what they learned during this workshop. Deborah Messinger, Glen McCafferty, Sue Ellen Knowles and I will show the work we've done in practicing the techniques of Anne Abgott. How to mingle color while keeping it strong will be one demonstration. Painting reflective silver bowls will be another.

Then let's have some fun with trying something new. What is old to one person is new to another. Let's SWAP art supplies. This is what I have in mind:

- Everyone bring an art material or supply that you **no longer use** to the April 15th meeting. This item must be related to painting. It could be an unusual brush, a book, a projector, a set of pigments or an old palette.
- Wrap this item so that it is not visible. Use brown paper bags or newspaper. It does not have to be fancy. This will add an element of surprise.
- We will draw numbers and match names to our sign-in register.
- When your name is called, you get to pick a package and be surprised with something "new" to use with painting. Once everyone has chosen an item, you will have the opportunity to SWAP for someone else's item.



TaWS April Monthly Meeting

Sunday, April, 15, 2012

2:00 PM – 4:00 PM

Saint Pauls United Methodist Church's Parlor

1700 N. Meridian Road

Tallahassee, FL 32303

New Officers to be Approved

The slate of officers for the 2012-2013 TaWS season are as follows:

President, Linda Pelc

Vice President, Susan Swihart

Secretary, Doreen Schaller

Treasurer, Ken Menke

The vote to approve these officers will take place at the April 15, 2012 monthly meeting.

Calendar

January/February

Monthly Meeting

Sunday, April. 15, 2012
 2:00-4:00 PM
 St. Paul's
 United Methodist
 Church's Parlor
 1700 N Meridian Rd.
 Tallahassee, FL 32303

Artist Dialogue

No Dialogue during
 April

Board Meeting

No May Board Meeting
 due to Tri-State

24th Tri-State Juried Water Media Exhibition

May 4, 2012
6:00—9:00 PM
Opening Reception
LeMoyne Center for
the Visual Arts

6:30 PM
Awards Ceremony

TaWS 24th Tri-State Juried Water Media Exhibition

Say Ahhhhhh
Lori Pitten Jenkins

The time has come to make all our plans happen. The 24th TaWS Tri-State will open May 4, 2012 at 6:00 PM as part of the First Friday celebration at the LeMoyne Center for the Visual Arts, Tallahassee, FL.

Volunteers are needed to make this evening a grand party for those TaWS members who attend.

- Thursday, April 26th, 10:00 AM: volunteers will be needed to help unpack the shipped paintings
- Friday, April 27th, 10:00 AM – Noon: members will need to help with hand delivered paintings.
- Friday, May 4th, 6:00 PM: Finger foods need to be donated. People will have to set up chairs in the LeMoyne garden for the awards ceremony, and we need greeters.

We will pass around a sign-up sheet at the April 15th monthly meeting. If you can't make that meeting and still want to help out, please contact Stuart Johnson at 850-875-2511 or innkeeper@tds.net. You may also contact Penny G. Anderson at 850-893-4636 or pennylupaints@comcast.net.



Tri-State Artists

Recognition goes to Stuart Johnson and Penny G. Anderson for work as Co-Chairpersons in organizing the 24th Tri-State Juried Water Media Exhibition. We appreciate all the energy they put into this project. Thank you.

In total TaWS received 162 entries from 68 artists. From those entries 64 paintings from 49 artists were chosen by our juror, Ted Minchin. To further break this down, there were 21 artists from Tallahassee accepted, 22 artists from cities in Florida other than Tallahassee, 1 from Alabama, 4 from Georgia and 1 from Arizona. Our Arizona member has been a long time resident of Florida who just recently moved to Arizona. She is "grandfathered" into TaWS as long as she keeps her yearly membership.

The 24th Tri-State is an exhibition on par with large state, regional and national exhibitions. How is this determined? Several factors play into this assessment. The professionalism of artists who enter and the quality of artwork they produce is the most important factor. These artists are attracted to enter the exhibition by the fairness and intelligence of the juror's reputation and also the total of prize monies that are awarded. The juror for all Tri-State exhibitions must hold national signature ranking, NWS, AWS or TWSA. This person must reside outside of Florida, Georgia or Alabama in order to avoid subjective favoritism in their choices. The juror is also chosen from recommendations from artists who have had been in his/her's classes.

This year the Tri-State will award over \$7000 in award monies. Tonya Toole, her fund-raising commintter and the TaWS Board did a fabulous job.

President: Linda Pelc
lipelc@yahoo.com
H = 850-536-1942
C = 850-728-0155

Vice-President & Programs
Penny G. Anderson
pennylupaints@comcast.net
H = 850-893-4636
C = 850-320-4404

Secretary: Tonya Toole
ttoole@fsu.edu
C = 850-508-3319
H = 850-349-2462

Treasurer: Ken Menke
klmenke@comcast.net
H = 850-562-6218

Membership: Stuart Johnson
innkeeper@tds.net
H = 850-875-2511

Past President
Brush Strokes Chairperson
Mary Apple
meapple@comcast.net
H = 850-386-7985
C = 850-570-0852

Past-President & Non-Profit
René Lynch
rlynch9878@earthlink.net.
H = 850-893-9458

Past President
Eluster Richardson
eluster7@embarqmail.com
C = 850-545-9133
H = 850-893-0059

Newsletter Editor
Karol D. Selvaggio

Hospitality
Sue Ellen & Henry Knowles
sue-
knowles@embarqmail.com
850-294-2187

Historian
Workshop Chairperson
PAT--Plein Air Tallahassee
Lorraine Clark
clarkm32311@comcast.net
H = 878-3278

Publicity
Doreen Schaller
dgschaller@juno.com
H = 850-926-4943
C = 850-414-4831

Web Mistress
Ursula Jackson
ursulabj@embarqmail.com
H = 325-1719

Web Site Maintenance
Ethan & Ann Kromhout
ann-ethan@att.net

Congratulations to these Tri-State Artists

Lee Albion
Susan Allen
Penny G. Anderson
Mary Apple
Tony Bareham
Doris Closson
Susana Cremin
Carol Meyer Davey
Dana Daydodge
Kathleen Durdin
Janet Mach Dutton
Joanna Ellington
Cheryl A. Fausel
Rosemary S. Ferguson
Nina Allen Freeman
Russell M. Fryar
Carol Frye
Mary Gambon
Harold Griner
Marina R. Haldas
Ruby Hall
Lori Pitten Jenkins
Nancy Juster Johnson
Michele Tabor Kimbrough

Anne Kittel
Sue Ellen Knowles
Lynne Kroll
Rene' Lynch
David Maki
Fran Mathis
William H. McKeown
Dean Mitchell
Bradford Mix
Yoshiko Murdick
Michael Parramore
Clare Pearson
Sue Pink
Eluster Richardson
Kathy Ross
Ed Royster
Clint Samples
Doreen Schaller
Diane Schmidt
Janis Spitzer
Don Taylor
Tonya Toole
Esther M. Tubbs
Harris Wiltsher
Mary Wyatt

New Signature TaWS Members

As a result of the 24th TaWS Tri State Water Media Exhibition the following TaWS members achieved the Signature Status: Congratulation to these members.

Doris Closson
Carol Frye
Lori Pitten Jenkins
Sue Ellen Knowles
Tonya Toole
Esther Tubbs

TaWS Exhibits for the Golden Eagle Ladies Club



Jan Bill-Walker



TaWS artists at Golden Eagle Ladies Club Luncheon

On Friday, March 16, 2012, Jan Bill-Walker invited TaWS artists to show their paintings to the women of the Golden Eagle Ladies Club at their monthly luncheon. Eight TaWS artists set up their paintings at the Golden Eagle Country Club for the afternoon. Participating were: Penny G. Anderson, Mary Apple, Jan Bill-Walker, Nina Freeman, Rosemary Ferguson, Mary Gambon, Sue Ellen Knowles, and Dee Tallman.

There were about 50 people attending who were impressed with the quality of art work, and treasures were purchased! Penny G. Anderson, Vice President of TaWS, spoke to the crowd about the activities and value of the Tallahassee Watercolor Society. Our TaWS artists and the GELC members enjoyed meeting each other as well as the enthusiasm and talent displayed at this event.



Sue Ellen Knowles

Tall Timbers Adventure



Juanita Whiddon

A wild time was had by the Tallahassee Senior Center's Tuesday Morning Watercolor class. The majority of class participants are also TaWS members. Juanita Whiddon invited the group to a picnic and tour of Tall Timbers Research Station. Sixteen artists had their lunch at the picnic tables under the big oak trees near the Education Center. It started out to be a beautiful afternoon.

Juanita retrieved photographs and original watercolor painting from Tall Timber's archives. She used the photographs to tell the story behind Tall Timbers. Eluster Richardson then presented the unexpected treat of telling us about the watercolor paintings. He was the artist behind the paintings.

We all then climbed into the wagon for a tour of the grounds. The restored tenant farm highlighted the trip. Black clouds rolled in and thunder boomed while we were there. The trip back to the plantation house was one wild ride. We had one minute to debark the wagon and run to our cars as the wind gusted and the rain poured. What a crazy way to end a great adventure.



Member News:

Bill Abel's "House Full of Walls - Home Full of Heart" watercolor exhibit will be on display at Stifel & Capra, 260 West Broad Street, Falls Church, Virginia. Opening Friday, April 6, 5-8pm; Exhibit ending May 2, 2012.



Bill Abel's *Beach House*

Lori Pitten Jenkins has been accepted into the American Watercolor Society's 145th Annual International Exhibition.

Randy and Debra Brien:

Debra won 1st place with 'Carabelle Evening' in the St. George Island Plantation Club juried art show. The exhibit runs at the club house through April 16th. Randy and Debra have both been accepted to this year's Lemoyne Chain of Park. Randy and Debra have been invited to exhibit at the TMH Gala on the evening of April 26th. They will also open at the Gadsden Art Center on May 11th in the Zoe Gallery. Their exhibit is titled 'Town and Country' and will express local Gadsden county landmark structures and landscapes. For more information go to www.brienart.com



Lori Pitten Jenkins, *A Decided Fate*



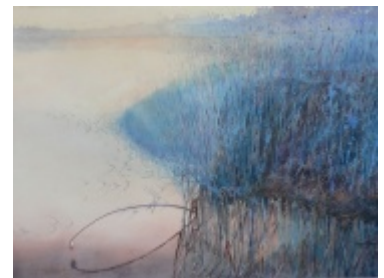
Debra Brien, *Carabelle Evening*



Randy B rien, *Gadsden Tobacco Barn*

Harold Griner was accepted into the Florida Watercolor Society 2012 Non-Signature Members Online Show and received a Merit Award for his painting "Dawning". The show is currently online at floridawatercolorsociety.org.

Edmond Royster was selected as the winner for Heineken's Black History Month contest, to be used for their promotion next year. A prize of \$5000 was awarded.

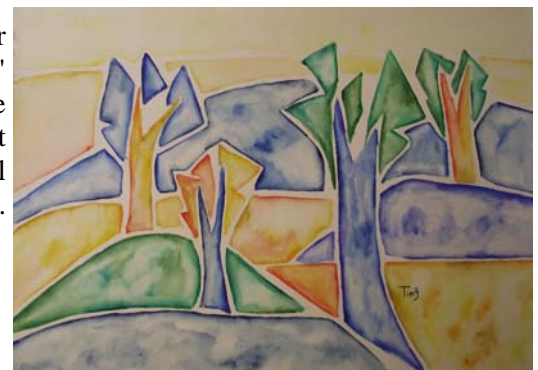


Harold Griner, *Dawning*



Ed Royster, *Roots, Reins, Love*

Amy Ting's watercolor "Landscape with Four Trees" has been accepted for the "Creative Tallahassee" exhibit at the Tallahassee City Hall. (April 6- May 15, 2012).



Amy Ting, *Landscap with Four Trees*

Frank Bolock is having a show at the Old Hyde Park Art Center in Tampa - reception is Friday April 20 5:30 to 9 PM (813-380-0275) www.artoverture.com/frank_bolock

Tina Fleming will be in the Wakulla Wildlife Festival April 20- 6:30pm-9:30pm & April 21- 10:00am- 4:00pm

Natalia Andreeva will be exhibiting April 14 -15, 2012 - Santa Fe College Spring Arts Festival 2012, Gainesville, FL. Booth #519 April 18 - 21, 2012 - the Glynn Art Association's 4th Annual Plein Air Affair, St. Simons Island, GA. April 21 - 22, 2012 - Featured artist at the 12th Annual Chain of Parks Art Festival, Tallahassee, FL. April 28 - 29, 2012 - the 28th Melbourne Art Festival, Melbourne, FL. May 3 - 13, 2012 – America’s Great Paint-out, Florida’s Forgotten Coast Plein Air Invitational, FL.

Rosemary Ferguson’s “Fast & Fun” workshop is May 22 & 23 from 9:30 -2:30 for \$110. Located on St. George Island, the Sea Oats Gallery will host this two-day workshop This is your opportunity to create with one of the best in a loose, light hearted way and be at the beach too! Watercolors or acrylics are acceptable. contact 850-927-2303, info@forgottencoastart.com

Bill McKeown took Third Place in COCA’s Creative Tallahassee Exhibition with his painting, *The Boat Mender*.

Linda Pelc received an Honorable Mention in COCA’s Creative Tallahassee Exhibition with her painting, *Wakulla River Manatee*.

Linda Pelc, *Wakulla River Manatee*

Don Taylor Presentation

At the TaWS March meeting, Don Taylor provided shared with those attending the growth of several of his paintings through a slide show. He explained how he took one of his architectural arch paintings from the drawing stage through a build up of layers of pigment and intensity of color. It was fascinating to watch as the final image emerged.

Although these paintings appear very detailed, Don gave away several of his secrets in accomplishing this illusion. Even though he had a reference photo of this subject, he rarely followed the patterns exactly. Patterns were the key, though. Creating and repeating the pattern always had his own touch of creativity.

Don Taylor, *Melk Shadown*



FRANK BOLOCK
hanging out in Hyde Park

ART SHOW

FRANK BOLOCK has been active in the Tampa Bay art scene since 2001. He paints in a unique style and many paintings feature Tampa Bay as their background. His latest paintings as well as many other works will be on display.

Reception **FRIDAY APRIL 20 2012**
5:30 PM to 9:00 PM

Old Hyde Park Art Center
705 Swann Ave. Tampa FL 33606

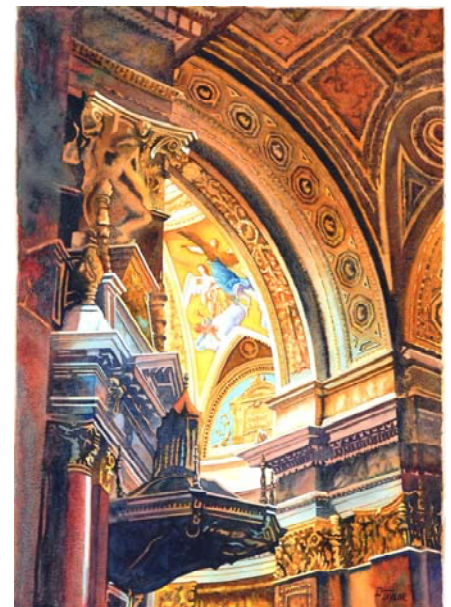
FINE WINE and FINE FOOD FREE

APRIL ARTIST
Some of Frank's paintings will be on display the month of April. The gallery is open from Tuesday thru Sunday Noon to 3 PM.

T.R.A. Watercolor Show
As a bonus, the Tampa Regional Artist's watercolor show will be on display during the reception.

FOR INFORMATION Contact: Frank Bolock
813 380 0275 fbolockart@yaho.com
www.artoverture.com/frankbolock

See Bolock's paintings of tasteful nudes ONLY AT THE RECEPTION



2012 Brush Strokes Announcement

Very shortly you will receive the 2012 Brush Strokes prospectus in the mail. Normally Brush Strokes is the TaWS fall member exhibition. This year we contracted with the Gadsden Arts Center to be our venue. The 2012 Brush Strokes Juried Member Exhibition is going to a part of a huge celebration at GAC. We will open Friday, August 17, 2012 along with the 100 year celebration of the Bell & Bates building where the GAC is housed. Beth Appleton will be the featured artist in the lower floor gallery. Brush Strokes will be exhibited in a second floor gallery.

Our space there is slightly smaller than what we have had in previous years. Because of this there are new limitations on the size of paintings that will be accepted into the show. Image size may be as large as 24 inches on any side and as small as 10 inch per side. Frame size will be limited to as large as 30 inch on any side. By limiting the size of the paintings entered, we will be able to accept and display 40-45 paintings.

It is important that you read this prospectus several times before entering to ensure you prepare your painting properly. There are changes to the rules for Brush Strokes this year.

2012 Brush Strokes Calendar:

April 13, 2012: Mail prospectus

Fri., May 25 – Application deadline.

Wed., June 27 -- Acceptance notification mailed.

Mon., Aug. 6 -- Hand delivered paintings to the Gadsden Arts Center, 10:00 AM – 2:00 PM

Wed.-Fri., Aug 1-3 -- Shipped paintings due at address specified in acceptance letter.

Fri., August 17 -- Opening Reception 6:00 PM – 7:30 PM

Sat., Sept. 15 – Awards Presentation 2:00 PM – 4:00 PM

Sat., Nov. 3 -- Last day of the 2012 Brush Strokes Exhibition.

Mon., Nov. 5: 10:00 AM–2:00 PM -- Pick up of hand delivered work.

Tue.-Wed., Nov 5-6 -- Return of Shipped Paintings.



Jack Richeson & Co.



Ampersand™



COUNCIL ON CULTURE & ARTS
FOR TALLAHASSEE/LEON COUNTY



BLICK art materials



Allison House Inn
Stuart and Eileen
Johnson
215 N. Madison St.
Quincy, FL
32351-2444
For Reservations
call toll-free
888-904-2511



AMERICAN FRAME

Picture Frames
Mat Boards
Plexi-Glass
Framing Supplies

**TaWS receives 5% of
your purchase price.**

Call for a catalog
or phone your order:
1 800 837 0844

Fax: 1 800 893 3898

Order online 24hr/day

M. Graham & Co. Hand Made Paints



PO Box 215
West Linn, OR
97068-0215
503 656 6761
e-mail:
colormaker
@mgram.com



Art Supplies

10% Discount to TaWS

Custom Framing
Fine Art Supplies

Mahan Square
1350 E Tennessee St. D-1
Tallahassee FL 32308
(850)877-0321
www.utrecht.com

**Lowest Prices in Town...
Guaranteed!**

www.tallahasseewatercolorociety.com

paint@tallahasseewatercolorociety.com

Tallahassee Watercolor Society
PO BOX 38502
Tallahassee, FL 32315-8502



Next General Meeting

Sunday, April 15, 2012
2:00 PM—4:00 PM

Saint Pauls United
Methodist Church's Parlor
1700 N. Meridian Road
Tallahassee, FL 32303

Please bring a dish to share.

Annual membership renewals are due January 1st or before

PLEASE KEEP YOUR E-MAIL ADDRESS UP TO DATE. SEND ALL MEMBERSHIP INFORMATION TO
TaWS membership Chair—PO BOX 38502—Tallahassee, FL 32315 or innkeeper@tds.net

MEMBERSHIP FORM: Tallahassee Watercolor Society—Serving Florida, Alabama A& Georgia
501.c3 Non Profit Organization

Date: _____

___Renewing ___ New Change of: ___Address ___Phone ___E-mail

Name(s): _____

Address: _____

Phone: _____ E-mail: _____

Cell Phone: _____

Artist's Website: _____

*If none, please print "no."

2012

___ \$30 Individual Membership

___ \$40 Family Membership

___ \$50 Business Membership

Includes one year advertisement in our newsletter.

Please enclose business information and your logo

___ \$ (_____) contribution towards the 2012
Members Award

___ Yes, I'll be happy to
serve on a committee or
help TaWS in any way
that I can.

My area of expertise is:

Do not include my name on:

___ Distribution list to TaWS
members

___ Distribution list to art
suppliers

___ Printed newsletter request-
ed

Please fill in this form, make
your check payable to the
Tallahassee Watercolor Socie-
ty, and send both to:

**TaWS Membership Chair
PO Box 38502
Tallahassee, FL 32315-8502**