

Watercolor News

www.tallahasseewatercolorssociety.com

paint@tallahasseewatercolorssociety.com

September, 2012

Hello Again By: Linda Pelc, TaWS President

Welcome to a new season of celebrating creativity. I applaud the members of the Tallahassee Watercolor Society who worked through the hot summer to organize the 2012 Brush Strokes Juried Member Exhibition which successfully opened at the Gadsden Arts Center on August 17, 2012. Glen McCafferty, Lana Dixon, Irma Vergara and Sue Ellen Knowles collected application information, sent letters to art businesses asking for merchandise awards, accepted and unpacked paintings and assisted Sara Ruth McKeown in hosting the opening. It was a joy working together. The work was frequently paired with laughter and lunch. This fellowship and friendship are the quiet rewards that come from being a part of the Tallahassee Watercolor Society.



Plans are being laid for two major workshops. Susan Allen and Deborah Morningstar make up the new workshop committee. They are finalizing the details of bringing Doug Walton to Tallahassee in November, 2012 for a workshop using water media. Flyers full of information on this workshop will be sent shortly. I can tell you that it will be 3 days full of intense creativity.

Everyone has a special skill to contribute. We are a society of volunteers. For many members painting is a second career. Some bring a financial planning background to the group. Others organized major events. We have people who are good with computers and people just good at doing whatever needs to be done. I will be asking members to tap into those special skills and use them to make this a stronger society of creative artists. We do need help.

- Penny G. Anderson, Vice President, needs assistance with brainstorming, planning and organizing programs for the monthly meetings.
- No Artist Dialogues have been scheduled, yet. We need a champion to chair this activity. It would involve finding hosts, scheduling and promoting this important event.
- TaWS works as a team. Members offer support, encouragement by sharing their knowledge. The Brush Strokes committee came together this past year to learn more about the business of art. We had a lot of fun together. We are looking for another group of four or five to take through this experience.

This is going to be the year of opportunity. Plans are being set for 2 major workshops, 2 exhibitions, 8 educational programs, a big Christmas party and a spring fieldtrip. I invite you to take advantage of the opportunities to interact with a great team. Please contact me, Linda Pelc, at 850-536-1942 or linzp60@hotmail.com.



Michele Hope and Sue Ellen Knowles at
Brush Strokes Opening

Calendar

September—October

Monthly Meeting

Saturday, September 15, 2012

2:00-4:00 PM

Gadsden Arts Center
13 North Madison Street
Quincy, Florida

**Presentation of Awards
for 2012 Brush Strokes
Juried Member Exhibition**

Artist Dialogue

No Dialogue during
September

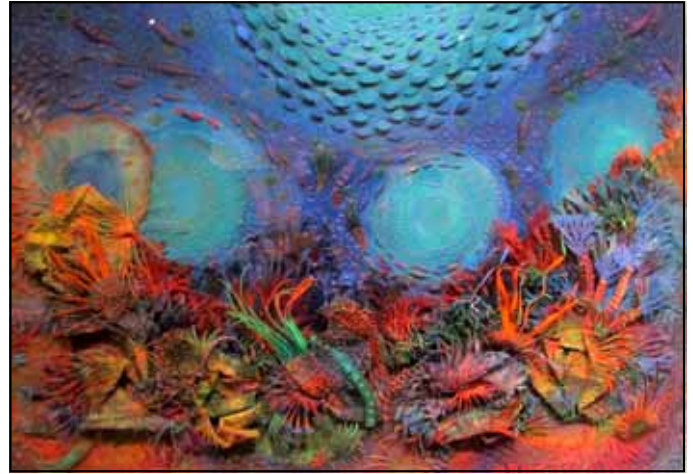
Board Meeting

2:30 PM

Wednesday, October 3,
2012

2012 Brush Strokes Juried Member Exhibition

This time the Tallahassee Watercolor Society partnered with the Gadsden Arts Center to produce a grand opening party for four exhibitions. August 17, 2012 saw the beginning of TaWS's Brush Strokes, assemblages from Beth Appleton, sculptures from Deborah LeGrassee, painting and sculpture from Ben Bivins and the GAC Artist Guild collection of multimedia work. The Gadsden Arts Center filled with 300 plus people to celebrate the art.



Beth Appleton
Watercolor Assemblage

TaWS's members watercolor paintings lit up the Bates Gallery with sparkling color. Twenty-eight members are represented by 36 impressive paintings. Emerging artists captured awards along with the experienced artists.

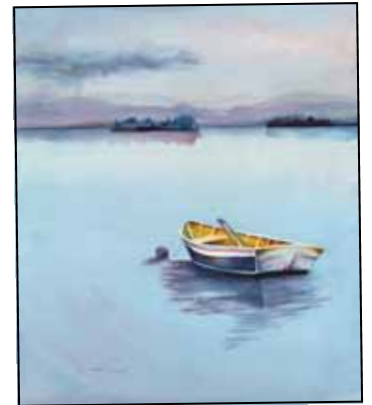
On Saturday, September 15, 2012 the Tallahassee Watercolor Society will announce and present awards to the winning artists at a special ceremony at the Gadsden Arts Center. The program begins at 2:00 PM and will start our series of monthly meetings. This will be the time to applaud these artists. Join us in this celebration.



Sue Ellen Knowles, "Kerah"



Russell Fryar,
"Fascinating"



Nancy Beck, "Quiet Mornings"

Participating Artists in the 2012 Brush Strokes are:

Susan Allen, Penny G. Anderson, Nancy Banks, Frank Bolock, Ruth Draper, John Felton, Russell Frayer, Harold Griner, Marina Haldas, Sue Ellen Knowles, Glen Mccafferty, Michele Tabor Kimbrough, Bill McKeown, Dean Mitchell, Deborah Morningstar, Yoshiko Murdick, Michael Parramaore, Ann Pearce, Linda Pelc, Nathaniel Pye, Eluster Richardson, Lee Smith Albion, Janis Spitzer, Susanne Taranto, Don Taylor, Tonya T^Oole, Cassie Tucker and Irma Vergara.

President: Linda Pelc
lipelc@yahoo.com
H = 850-536-1942
C = 850-728-0155

Vice-President & Programs
Penny G. Anderson
pennylupaints@comcast.net
H = 850-893-4636
C = 850-320-4404

Secretary/Publicity
Doreen Schaller
dgschaller@juno.com
H = 850-926-4943
C = 850-414-4831

Treasurer: Ken Menke
klmenke@comcast.net
H = 850-562-6218

Membership: Stuart Johnson
innkeeper@tds.net
H = 850-875-2511

Past President
Brush Strokes Chairperson
Mary Apple
meapple@comcast.net
H = 850-386-7985
C = 850-570-0852

Past-President & Non-Profit
René Lynch
rlynch9878@earthlink.net.
H = 850-893-9458

Past President
Eluster Richardson
eluster7@embarqmail.com
H = 850-893-0059
C = 850-545-9133

Newsletter Editor
Karol D. Selvaggio
karol@culpeppercc.com
H = 850-385-9644
C = 850-528-6585

Hospitality
Sue Ellen & Henry Knowles
sueknowles@embarqmail.com
850-294-2187

Historian
PAT--Plein Air Tallahassee
Lorraine Clark
clarkm32311@comcast.net
H = 878-3278

Workshop
Susan Allen
susanallen@susanallen.com
watercolors.com
H = 850-877-0460
C = 850-443-5717
Deborah Morningstar
morningstardeborah@gmail.com
H = 850-539-9931
C = 850-264-6540

Web Mistress
Ursula Jackson
ursulabj@embarqmail.com
H = 325-1719

Web Site Maintenance
Ethan & Ann Kromhout
ann-ethan@att.net

TaWS September Meeting

This is a reminder of our first meeting of the season to be held on Saturday, September 15th from 2 – 4 p.m. at the Gadsden Arts Center in Quincy. Our featured guest will be Beth Appleton. Beth is a Florida artist with very unique watercolor and cut paper assemblages that are intricate and powerful. A graduate of Florida State University, Beth was an art teacher in Leon County for several years and continued her artistic endeavor that has evolved into building multi-dimensional relief forms out of paper. The intricacy of her paper assemblage is stunning. The theme of her wonderful exhibition that is on view now at Gadsden Arts has a distinctly environmental slant. Being a Gulf Coast resident, water and all things aquatic are Beth's love and concern. She is constantly inspired by what lies beneath the surface of our coastal waters. Don't miss the opportunity to hear Beth discuss her work.

TMH Change-Out

This is a reminder to send images of the paintings you would like to have displayed at Tallahassee Memorial Hospital via e-mail to René Lynch at rlynch9878@earthlink.net. The change-out of paintings is scheduled for October 24th at 4:00 p.m. and they want to receive submissions by September 27th. Please refer to Rene's previous e-mail reminder for additional details. Thank you.

In Support of Business Who Support the Arts

Awards for the 2012 Brush Strokes Juried Member Exhibition come from member contributions and companies who donate art merchandise. Thank you to the following members who contributed to the cash awards: Mary Apple, Susan Allen, Penny G. Anderson, Linda Cooksey, Ruth Draper, Judy Ehrhardt, Rosemary Ferguson, Harold Griner, Claire Hall, Lori Pitten Jenkins, Kay Kuhne, Bill McKeown, Ken Menke, Linda Menke, Yoshiko Murdick, Linda Pelc, Jeanne Tallman, Virginia Thorne, Tonya Toole and Irma Vergara

Nine companies donated merchandise towards the awards for Brush Strokes. In return we encourage your support for the following companies by purchasing supplies from them: Ampersand Art Supply, www.ampersandart.com; Cheap Joe's Art Stuff, www.cheapjoes.com; Creative Catalyst, www.ccpvideos.com; Golden Artist Colors, Inc., www.goldenpaints.com; Jack Richeson & Co., www.richesonart.com; Winsor & Newton, www.winsornewton.com; Keeton's Office and Art Supply, www.keetonsonline.com; Daler Rowney, www.daler-rowney.com and Chroma, www.chromaonline.com. Many thanks to these companies for their support.



Jack Richeson & Co.



Southern Watercolor Society

The Southern Watercolor Society is bringing their annual exhibition to the Gadsden Arts Center in Quincy, FL. It will open February 8, 2013. Florida, Georgia and Alabama are included in the 18 states and District of Columbia that comprise the Southern Watercolor Society. Wouldn't it be grand if a lot of the paintings accepted into the SW exhibition were to come from these states?

The prospectus for this exhibition is now available on the Southern Watercolor Society's website, www.southernwatercolorssociety.org. Deadline for the application is November 2, 2012. That still leaves time to finish that exceptional painting.

Mary Ann Beckwith, AWS, NWS, will jury this exhibit. She is a recently retired Professor of Art at the Michigan Institute of Technology. Mary Ann will be instructing a 4-day workshop entitled "The Brush and Beyond" in the studio at the Gadsden Arts Center beginning Monday, February 4, 2013 and running through Thursday, February 7, 2013. She promises that this workshop will be an art altering experience. Participants will be exposed to new techniques and materials that will allow them to better express their visions and ideas through their paintings. More information and an application can be found on the Southern Watercolor Society's website or contact Linda Pelc at linzp60@hotmail.com or Bill McKeown at whmckeown@tds.net.



**Mary Ann Beckwith
in the Classroom**



Beckwith Painting

Member News

Georgia Artists' Guild 2013 Lian Zhen Watercolor Workshop & Chinese Watercolor, July 15-19, 2013 fee: \$300 for five days or \$60 per day. www.lianspainting.com

Joe Fettingis Watercolor Workshop, Sept 16-18, 2013, Workshop fee: 3 days for \$180. www.jfettingis.com
Contact Carole Hall Gum 229-432-5417, klgum@mchsi.com

Plein Air Tallahassee announces its next paint out at St. Marks Lights on Sept 22, 2012; 10 AM - 5 PM. Park gate fee is \$5/car. Lorraine Clark, organizer, 850-933-5337.

Nina Freeman and **Eluster Richardson** will be doing painting Demonstrations at the Florida Watercolor Society Convention in Orlando, September 13 through 17, 2012. **Nina Freeman** has been elected Secretary of FWS for 2013. See "Quayside" www.floridawatercolor.org/index.php Nina's "Young Herons" has been included in *Splash 13-The Best of Watercolor*. See her blog www.ninaallenfreeman.net

Penny G. Anderson is now a signature member of the Georgia Watercolor Society after earning points for both national and member exhibitions over the past two years.

Marian Heath Axley's painting has reached level two of the selection process for international artists in the Shanghai Biennial Watercolor Exhibit in China. Out of 2,000 submissions only 125 were chosen from countries other than China. Another 125 will be chosen from Chinese watercolor artists. However the final selection is delayed another month because of severe weather in some provinces causing delay of the Chinese submissions. Final selection will be made on September 26th and the exhibit opening will be held in late October. The Shanghai Biennial is publicized to be the world's largest and best watercolor exhibit. Americans Nicholas Simmons and John Salmonen have been members of the panel of judges. Alvaro Castagnet from Uruguay is also a judge. The remainder of the panel of ten or more judges is mostly composed of esteemed Chinese artists.

Nancy J Johnson has an exhibit of pencil drawings at the Duval Hotel's "Art Cove".

FRANK BOLOCK's paintings will be on display at Hillsborough Community College, Dale Mabry Campus, Tampa FL in the Gourmet Room of the Humanities Building during the Fall Semester from Sept. 20 - Dec. 12. Opening Night Reception Sept 20 at 7:00 pm. RSVP 813-253-7478. If you can't make the reception, contact Frank Bolock to make other arrangements.

Bill McKeown's work "The Ship Doctor" received the WSA Juried Members Award #2 in the Water Society of Alabama 71st National Exhibition. His painting "See Rock City" is accepted in the Georgia Watercolor Society 2012 Member's Exhibition.

Congratulations to **Janis Spitzer**. Her acceptance into the 2012 Brush Strokes has earned her Signature status with the Tallahassee Watercolor Society.



Janis Spitzer
"Couldn't We Just Go
To McDonalds?"



Enjoying the Opening of 2012 Brush Strokes Juried Member Exhibition



The Crowd



Susan Allen, Mark Pelt
and Bill McKeown



Irma Vejera, Karol Selvaggio
And Mary Transou



The Crowd

Non-Profit Status

For TaWS “non-profit” means just that, non-profit. We exist for to benefit the artist. The monthly meetings are open to the public. The workshops are for members, however, any artist may attend by becoming a member. Yearly dues are just \$30.00. Dues aid in paying the expense of sponsoring two major exhibitions per year. Application fees are funneled into exhibition awards. The promise to our membership is that the expense to them for participating in any activity will be kept as low as possible.

TaWS is a non-profit, all volunteer organization. A copy of the official registration and financial information may be obtained from the Division of Consumer Services by calling toll free (800-435-7352) within the state. We appreciate the many hundreds of hours given freely by our Board and members to continue the activities enjoyed by our family of artists.



Michele Tabor Kimbrough,
"Marching Band"



Jack Richeson & Co.



Allison House Inn
Stuart and Eileen
Johnson
215 N. Madison St.
Quincy, FL
32351-2444
For Reservations
call toll-free
888-904-2511



AMERICAN FRAME

Picture Frames
Mat Boards
Plexi-Glass
Framing Supplies

**TaWS receives 5% of
your purchase price.**

Call for a catalog
or phone your order:
1 800 837 0844

Fax: 1 800 893 3898

Order online 24hr/day

M. Graham & Co. Hand Made Paints



PO Box 215
West Linn, OR
97068-0215
503 656 6761
e-mail:
colormaker
@mgram.com



Art Supplies

10% Discount to TaWS

**Custom Framing
Fine Art Supplies**

Mahan Square
1350 E Tennessee St., D-1
Tallahassee FL 32308
(850)877-0321
www.utrecht.com

**Lowest Prices in Town...
Guaranteed!**

www.tallahasseewatercolorssociety.com

paint@tallahasseewatercolorssociety.com

Tallahassee Watercolor Society
 PO BOX 38502
 Tallahassee, FL 32315-8502



Next General Meeting

Saturday September 15, 2012
 2:00 PM—4:00 PM

Gadsden Arts Center
 13 North Madison Street
 Quincy, Florida

Please bring a dish to share.

Annual membership renewals are due January 1st or before

PLEASE KEEP YOUR E-MAIL ADDRESS UP TO DATE. SEND ALL MEMBERSHIP INFORMATION TO
 TaWS membership Chair—PO BOX 38502—Tallahassee, FL 32315 or innkeeper@tds.net

MEMBERSHIP FORM: Tallahassee Watercolor Society—Serving Florida, Alabama A& Georgia
 501.c3 Non Profit Organization

Date: _____
 ___Renewing ___ New Change of: ___Address ___Phone ___E-mail
 Name(s): _____
 Address: _____
 Phone: _____ E-mail: _____
 Cell Phone: _____
 Artist's Website: _____

*If none, please print "no."

2013

- _____ \$30 Individual Membership
- _____ \$40 Family Membership
- _____ \$50 Business Membership

Includes one year advertisement in our newsletter.
 Please enclose business information and your logo

_____ \$ (_____) contribution towards the 2012
 Members Award

_____ Yes, I'll be happy to
 serve on a committee or
 help TaWS in any way
 that I can.
 My area of expertise is:

- Do not include my name on:
- ___ Distribution list to TaWS members
 - ___ Distribution list to art suppliers
 - ___ Printed newsletter requested

Please fill in this form, make
 your check payable to the
 Tallahassee Watercolor Society,
 and send both to:

TaWS Membership Chair
PO Box 38502
Tallahassee, FL 32315-8502